

## Hinges

adjustable / zinc die casting

### SPECIFICATION

#### Types

- Type **H**: vertically adjustable
- Type **B**: horizontally adjustable
- Type **HB**: vertically and horizontally adjustable

Zinc die casting

plastic coated

black, RAL 9005, textured finish **SW**

silver, RAL 9006, textured finish **SR**

Stainless Steel **A4**

German Material No. 1.4408

matte shot-blasted **GS**

Pin

Stainless Steel AISI 316Ti



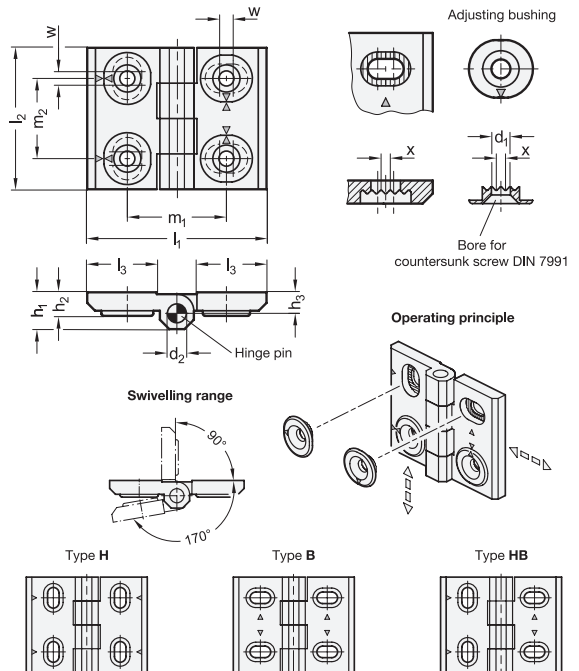
### INFORMATION

With hinges GN 127 doors and covers can be positioned snugly and in a finely adjusted manner by moving the adjusting bushings. In this way, door gaps can be readjusted and manufacturing tolerances can be compensated. The arrowheads mark the middle of the adjustable range  $w$ .

The Stainless Steel variants are also generally suited for applications under especially aggressive conditions.

### TECHNICAL INFORMATION

- Stainless Steel characteristics (see page A26)
- Load rating information of hinges (see page A40)
- List of hinges types (see page 1362)



\* Complete with colour index of the Hinges (SW or SR)

**SW**      **SR**  
RAL9005      RAL9006

### GN 127

Description	l1	l2	d1	d2	h1	h2	h3	l3	m1	m2	w	x	△
GN 127-ZD-52-40-H-*	52	40	4.5	4	9.5	6	5.5	22	30	22	2	0.5	69
GN 127-ZD-64-50-H-*	64	50	5.5	6	11.5	6.5	7.5	28	37	27	3	0.75	115
GN 127-ZD-76-60-H-*	76	60	6.5	8	15	9	8.5	33.5	42	34	4	1	205
GN 127-ZD-52-40-B-*	52	40	4.5	4	9.5	6.5	5.5	22	30	22	2	0.5	69
GN 127-ZD-64-50-B-*	64	50	5.5	6	11.5	7	7.5	28	37	27	3	0.75	115
GN 127-ZD-76-60-B-*	76	60	6.5	8	15	9	8.5	33.5	42	34	4	1	205
GN 127-ZD-52-40-HB-*	52	40	4.5	4	9.5	6.5	5.5	22	30	22	2	0.5	69
GN 127-ZD-64-50-HB-*	64	50	5.5	6	11.5	7	7.5	28	37	27	3	0.75	115
GN 127-ZD-76-60-HB-*	76	60	6.5	8	15	9	8.5	33.5	42	34	4	1	205

### GN 127-A4

### STAINLESS STEEL

Description	l1	l2	d1	d2	h1	h2	h3	l3	m1	m2	w	x	△
GN 127-A4-52-40-H-GS	52	40	4.5	4	9.5	6	5.5	22	30	22	2	1	78
GN 127-A4-64-50-H-GS	64	50	5.5	6	11.5	7	6.5	28	37	27	3	1.5	140
GN 127-A4-76-60-H-GS	76	60	6.5	8	15	9	8.5	33.5	42	34	4	2	259
GN 127-A4-52-40-B-GS	52	40	4.5	4	9.5	6	5.5	22	30	22	2	1	76
GN 127-A4-64-50-B-GS	64	50	5.5	6	11.5	7	6.5	28	37	27	3	1.5	137
GN 127-A4-76-60-B-GS	76	60	6.5	8	15	9	8.5	33.5	42	34	4	2	253
GN 127-A4-52-40-HB-GS	52	40	4.5	4	9.5	6	5.5	22	30	22	2	1	77
GN 127-A4-64-50-HB-GS	64	50	5.5	6	11.5	7	6.5	28	37	27	3	1.5	138
GN 127-A4-76-60-HB-GS	76	60	6.5	8	15	9	8.5	33.5	42	34	4	2	256